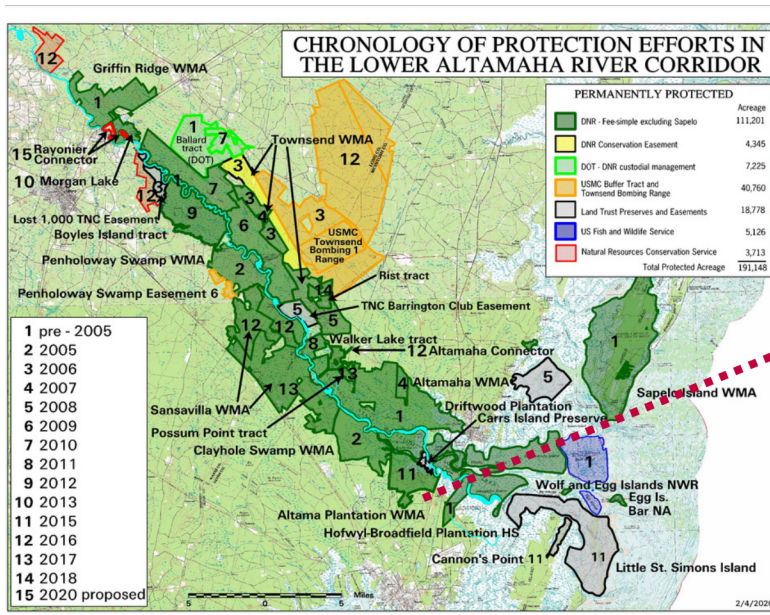




Buc-ees is moving into the neighborhood. The character and safety of our communities, our history, and the wildlife and environment of North Glynn must be protected as our county grows. That's why we expect Buc-ees to...

BE A GOOD NEIGHBOR

EXIT 42 IS THE GATEWAY TO THE GOLDEN ISLES



The State of Georgia, The Nature Conservancy, and many private citizens have invested hundreds of millions of dollars to protect 191,000 acres of land in this 50-mile-long corridor. Any new changes must be respectful of this legacy.

The areas surrounding the exits off of I-95 give visitors their first impressions of what Glynn County has to offer. Of our four exits, only one—Exit 42, the northernmost exit in the county—is largely undeveloped and retains natural and historical assets unique to our coast. This character-rich landscape supports our economy through the East Coast Greenway walking and biking route, commercial fishing industry, historical sites, and other creative tourism.

WE MUST WORK TOGETHER TO PROTECT OUR VALUES.

LEARN MORE ABOUT HOW BUC-EES CAN BE A GOOD NEIGHBOR AT ONEHUNDREDMILES.ORG/BUCEES.



HOW TO BE A **GOOD NEIGHBOR:**

PRESERVE OUR HISTORY & CULTURE

Invest in restoring the Altamaha Canal to acknowledge its historic significance and offer recreation opportunities, like paddling and a bike path connected to downtown Brunswick. Maintain open spaces that retain the natural features of the Altamaha conservation corridor and the history of the Gullah Geechee Cultural Heritage Corridor.

ESTABLISH PROTECTIVE BUFFERS

Implement buffers as recommended by the U.S. Department of Agriculture. Buffers will offer windbreaks, noise control, and visual screening to prevent this large commercial property and its associated high-volume traffic from diminishing the quality of life for surrounding residents.

PROTECT THE RIVER & WETLANDS

Construct stormwater management systems to capture and treat runoff from the 24 acres of pavement polluted with oil, suspended solids, sediments, and metals. Employ extra protections to prevent spills & overflow, detect leaks, and protect against corrosion for the underground storage tanks associated with Buc-ees' 120 fuel tanks. Contribute to a state-of-the-art wastewater treatment system that will protect the Altamaha River from any direct wastewater discharge.

MINIMIZE LIGHT POLLUTION

Utilize safe lighting practices that minimize disturbance to our coast's threatened and endangered sea turtles, migratory birds, and other wildlife, while also benefiting human health and maintaining the dark skies that are an important part of the surrounding rural neighborhoods. Ensure that lighting plans follow the recommendations of federal and state scientists.

LEARN MORE AT [ONEHUNDREDMILES.ORG/BUCEES](https://onehundredmiles.org/bucees)